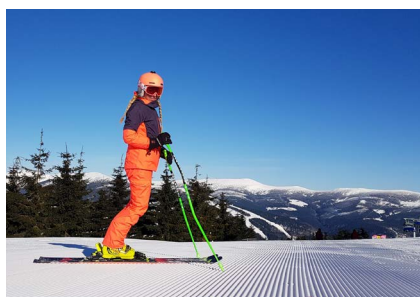


Newsletter

For Foreign Offices

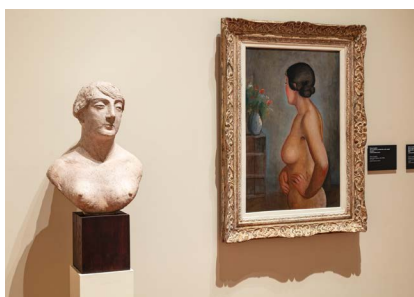


Brno



Trade news

Hotels & Restaurants
Transport
Data & Research
MICE



Product news

Towns & Regions
Culture & Sport



Corporate news

News from CzechTourism



Prague introduces Official City Partner

Prague City Tourism has launched a program called Official City Partner (OCP) in response to growing demand from travellers for premium services. In the first three quarters of this year, occupancy at top Prague hotels rose by 15% year on year. The amount tourists spend has also risen. OCP links up top hotels with the aim of supporting the top end travel industry and the city's image. It guarantees visitors a high standard of service and a responsible approach from partners to sustainable operations.

[Find out more >](#)

New director at Hotel Mandarin Oriental Prague

Barbara Göttling has taken the helm at Prague's Mandarin Oriental Hotel. She brings to Prague over 23 years of experience in top positions at the Hyatt Hotels Group, Accor and others, as well as a strong focus on the quality of the workplace and sufficient possibilities for women to develop their careers. "I am delighted to have joined the Mandarin Oriental Prague, a place that unites history with modern elegance perfectly," stated Barbara Göttling. "What differentiates this hotel from all the others is its unique location in a former monastery, a fact that offers guests a truly authentic experience amid Prague's cultural heritage. I am looking forward to creating unforgettable experiences with my team, ones that reflect the soul of this city and the world-class standards that Mandarin Oriental is known for."

Source: Mandarin Oriental, Prague



Cyclists welcome at Botanique Hotel Prague

The Botanique Hotel Prague not only welcomes guests, but also their love of cycling. A key pillar of the hotel's philosophy is to promote sustainable modes of transport. If guests decide to explore Prague by bike, they will be happy to provide them with services that make this easier for them to achieve.

[Find out more >](#)



Fairytale wellness at Hotel Podlesí

This autumn the new Castle Wellness Waldorf opened at the Hotel Podlesí near Sněžné in the Vysočina Region. The sauna world here boasts several types of saunas, a Jacuzzi for 10 people and a Kneipp walkway. Another special feature is a part called Sea World which is designed for visitors up to the age of 12. Hotel guests can also enjoy an indoor heated pool featuring a wave machine - in summer there is an outdoor pool. They can also treat themselves to several kinds of massage.

[Find out more >](#)

Seven new routes to Prague with easyJet

easyJet is launching completely new routes from Birmingham, Glasgow, Nantes, Nice, Palma and Alicante. Flights from Liverpool have already begun. These are all new destinations for this year with easyJet linking Prague increasingly with the rest of Europe. The airline will now offer 21 destinations to the Czech capital.

[Find out more >](#)



Tickets for the new Baltic express now on sale

Czech Railways have launched ticket sales for the new Baltic express. With direct trains between Czechia and the Gdansk area, this new service will appear for the first time in the updated timetable issued 15th of December. There will be 4 pairs of trains a day. En route to the Baltic coast trains will stop in Klodsko, Wroclaw, Poznan, Bydgoszcz and Gdansk. Tickets and reservations can be made at Czech Railways ticket desks, online at www.cd.cz or in the Můj vlak app.

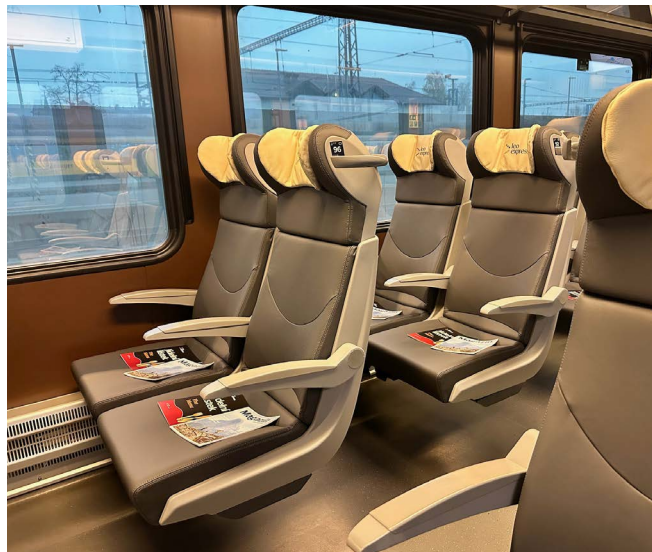
[Find out more >](#)



Leo Express invests millions into seats and WiFi

Leo Express is undertaking a complete revamp of seats in Economy class on trains between Prague and Ostrava (and on to Cracow and Košice). The company is investing tens of millions of crowns in the revamp of 865 seats including 20 for disabled passengers. This will bring the seat almost to the same levels of comfortable as those in higher classes on Leo Express trains. Improvements to WiFi (1.25 million crowns), the planned installation of 5G repeaters (24 million crowns) and the ongoing installation of ETCS (119 million crowns) have been significant investments by Leo Express, all in the name of improving services.

[Find out more >](#)



Trade news



Czechia attracting more foreign tourists - good for the economy

Foreign visitors are increasingly choosing Czechia as their holiday destination. This summer season, 2.8 million passengers arrived at Prague's Václav Havel Airport. Compared to last year, they now represent the largest number of arriving passengers. Most often these were tourists from the UK, Italy and France. In the third quarter of this year, 3.2 million foreigners came to Czechia, a year-on-year increase of 4.4%. This data was made public by CzechTourism, Prague Airport and a network of hotels called Czech Inn Hotels.

[Find out more >](#)

The number of visitors from distant markets is growing

Czechia remains a popular destination, especially among foreign visitors. In the third quarter of this year, mass accommodations received 7.7 million guests. Some 59% (4.6 million) of these were domestic tourists, 41% (3.2 million) visitors from abroad. From July to September 2024, travellers from neighbouring countries (Germany - 665,000, Poland - 299,000 and Slovakia - 269,000) chose Czechia as their holiday destination. Tourist from the US (193,000) and the UK (133,000) also arrived in greater numbers. The total number of nights tourists spent in this country exceeded the 20 million

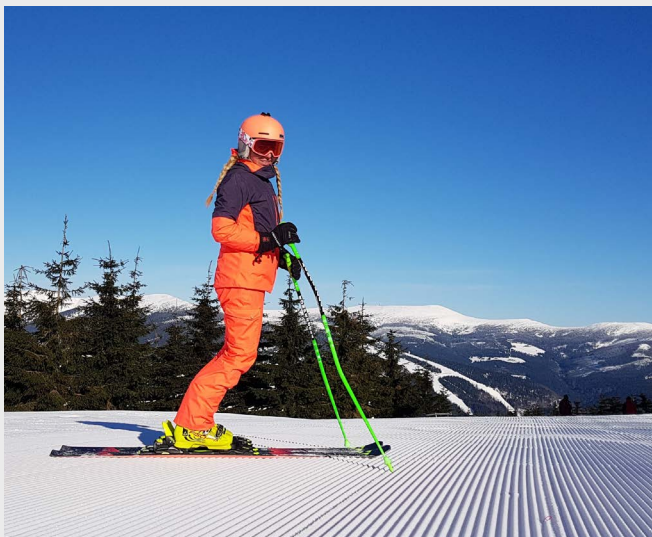
[Find out more >](#)



Czechia a top destination for wedding tourism

Czechia is increasingly on the radar of future newly-weds from other countries. Couples from all over the world choose this country for their big day, not only because of its rich history, wonderful castles, chateaux and other places offering true romance and a strategic position in central Europe, but also for its attractive price to quality ratio. Wedding tourism has recently become popular here and is a key factor in the incoming tourism market.

[Find out more >](#)



Mountain resorts hold down ski pass prices to last year's levels

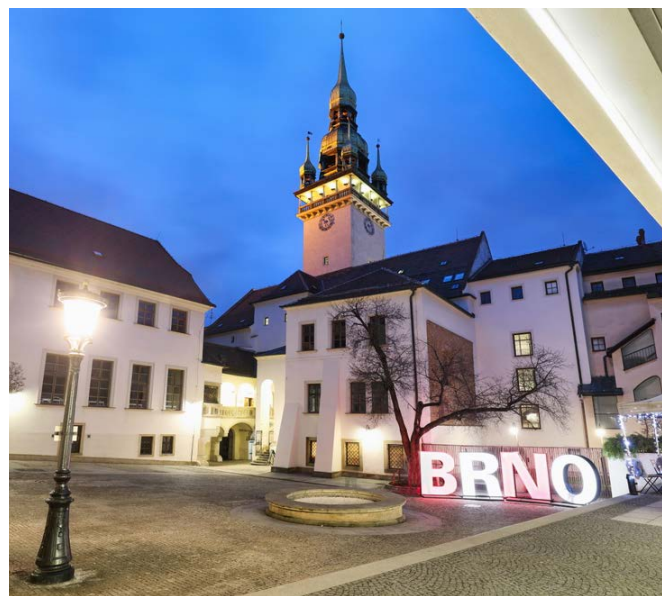
This year, visitors to the Czech mountains can look forward to a number of new developments while the price of a ski pass has been kept down to last year's levels. Czech ski resorts never stop improving their customer services and continue to invest in effective technology, so that they can offer winter sports fans and those who like crisp winter air sports experiences and skiing and maximum quality against a backdrop of changeable weather and fluctuating energy prices.

[Find out more >](#)

Ambassadors for the Brno Convention Bureau

Conference and international congress organisers will now be attracted to Brno and South Moravia by ambassadors in the newly created Brno Convention Bureau ambassador program. "The ambassadors' task will be to raise the profile of Brno and the South Moravia Region among event organisers and get out the message that they will find all the facilities they need here and a strong partner in the Brno Convention Bureau, which can assist with organisation using local knowledge and international experience," explains Martina Grůzová, director of the South Moravia Tourist Board under which the Brno Convention Bureau falls.

[Find out more >](#)



Central Bohemian Region



Kutná Hora Wine Cellars to move

If you are planning to taste wine at the Kutná Hora Wine Cellars, be aware that the winery is leaving the Convent of St Ursula and moving to a new address. This will be the Apak farm in the vicinity of the monastery which is slowly being renovated for the purpose. Until the end of the year, all events and tastings will take place at the current address. In the new year the winery will operate in interim conditions. The tasting rooms should be ready by the start of the new season, in May or June of next year.

[Find out more >](#)

Karlovy Vary Region

Krušnohoří Destination Agency launches new app

The Krušnohoří Destination Agency has fulfilled one of its main aims for 2024 regarding the development of tourist information in the area. Their website providing an information service for all tourists in the Krušné Mountains can now be found as an app available on Google Play and the App Store. The app can be downloaded free of charge and is available in Czech and German. "Our aim is for the app to provide all visitors to the Krušné Mountains with information on the destination they need such as trip ideas, tourist destinations, services, events taking place here and so on – all in one place and downloaded on their smartphone," stated agency director, Štěpán Javůrek.

[Find out more >](#)

Vysočina Region



Cyklo Aréna Vysočina has revamped blue trail

The blue marked warm-up trail at Cyklo Aréna Vysočina near Nové Město na Moravě has undergone a complete rebuild. This is a singletrack designed for all terrain cyclists who ride just for the fun of it and doesn't include extremely steep climbs or difficult, rocky sections. The warm-up trail is suitable for families with children and less technically skilled cyclists. Its difficulty lies primarily in getting the wheels in the right places and negotiating the turns smoothly. The operators recommend it for other cyclists as a warm-up trail before attempting more challenging routes. The tricky World Cup Trail is also set for a makeover.

[Find out more >](#)

Zlín Region

Cyril & Methodius Trail set to expand

Cyril & Methodius Trail – A Council of Europe Cultural Trail is expanding its membership base. At November's general meeting of the International Association of European Cultural Cyril and Methodius Trails in Zlín, the destination management company Vysočina Tourism became the latest new member. The organization now boasts 37 official members from 10 countries. Members also voted in favour of a suggestion to create an international committee for the development of a trail in the Balkans where, despite a strong Cyril and Methodius tradition, the project has very few partners.

[Find out more >](#)



New tourist trail in Rožnov

Rožnov pod Radhoštěm has come up with a new feature for tourists who like to discover hidden corners of various towns. A new tourist trail entitled "Unknown Rožnov" leads visitors to lesser known, but for it all the more interesting places in this picturesque town. The 9km-long route marked with a pink letter "R" shows Rožnov pod Radhoštěm from an unexpected angle. A printed guide to the route is available from the tourist information centre on Masarykovo Square, or tourists can scan a QR code to download it to a device.

[Find out more >](#)

Olomouc Region

Visiting the Jeseníky Mountains makes more sense than ever

Popular tourist destination of the Jeseníky Mountains is getting over the disaster that September's floods brought. But now the Jeseníky face another threat – a tourism crisis. Why not help the region overcome hard times and show potential visitors that coming to the region makes sense. Many parts of the area were not affected by the floods and many of those that did suffer have quickly returned to normal. A sustainable influx of tourists could bring much-needed resources for the reconstruction of damaged infrastructure and economic stabilization of the region.

[Find out more >](#)





Carriage Museum successful at tourism awards

In November the winners of the Olomouc Region Contribution to the Travel Industry 2024 awards were announced (without a ceremony). The main prize was won by the Museum of Period Carriages in Čechy pod Kosířem. The owner Václav Obr also took away the Regional Governor's Prize for 2024. Other prize winners included the Rychlebské trails, the visitor centre at the Holba Brewery and the Bělecký Mill.

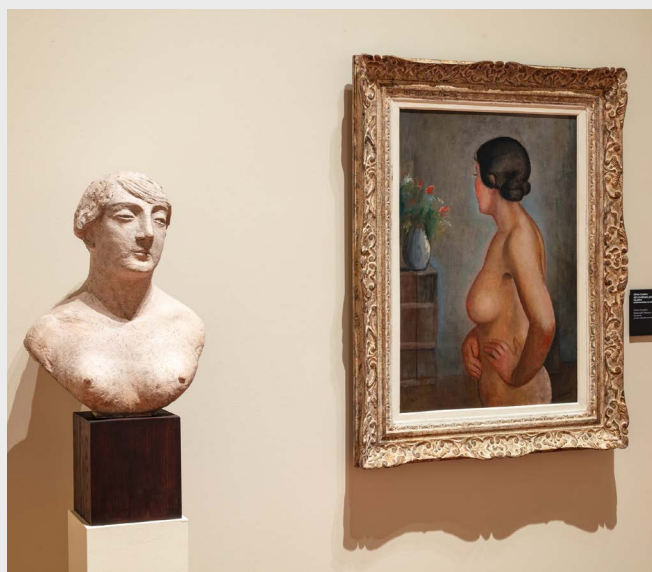
[Find out more >](#)

École de Paris: Artists from Bohemia and Interwar Paris

Follow in the footsteps of the Czech artists who shaped interwar Paris. New exhibition at the National Gallery Prague focuses on the works of Georges Kars, Othon Coubin, and François Zdeněk Eberl. Their work is presented alongside masterpieces by Amedeo Modigliani, Marcel Chagall, and Suzanne Valadon, with whom they worked together. Immerse yourself in the world of the cosmopolitan Paris of the time, the studios and cafés of the period, but also in the reality of everyday life.

Waldstein Riding School, Prague, until 2. 3. 2025

[Find out more >](#)



The French Collection

The exhibition at the Trade Fair Palace presents an extraordinary collection of works by international artists, forming a unique collection of French art outside France. Visitors can find masterpieces by artists such as Georges Braque, Paul Cézanne, Eugène Delacroix, Vincent van Gogh, Paul Gauguin, Henri Matisse, Claude Monet, Pablo Picasso, Auguste Renoir, and Georges Seurat. Visitors can admire the works of the French collection in the permanent exhibitions 1796-1918: Art of the Long Century and 1918-1938: First Czechoslovak Republic on the 3rd and 4th floors of the Trade Fair Palace accompanied by an audio guide or during guided tours.

Trade Fair Palace, Prague

[Find out more>](#)

Jizerská 50

Bedřichov is preparing to host the 58th edition of the biggest Czech cross-country skiing race. The four-day event features races for professional and amateur racers, children and lovers of both the classic and skating techniques, as well as fans and spectators... The race is attractive for the unique atmosphere of the Jizerské Mountains, a protected area that boasts many places of natural beauty.
Bedřichov, 6.-9. 2. 2025

[Find out more >](#)

JazzFest Znojmo 2025

The 17th edition of the popular Znojmo jazz festival will launch another season of culture in the town. This well-attended festival features internationally renowned jazz performers who perform at venues in the town and in the surrounding area. There's a swing dance hall, a club night, comedy contests in sand digging and freezing jazz in the streets. Under the slogan Wine goes to Jazz! concerts are always accompanied by the opportunity to taste quality wines from the Znojmo area.

Znojmo, 17. 1.-28. 3. 2025

[Find out more >](#)

Corporate news

News from CzechTourism

New Edition of the Czech Convention Bureau Monthly

This inspirational monthly publication brings readers tips on how to spice up company events with the magic of Czech Christmas traditions and regional experiences.

[Download here >](#)